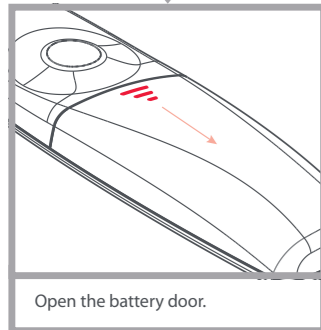


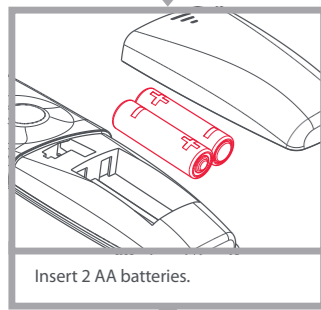
# URC 1669

## SIMPLE SET UP GUIDE

### WELCOME, PREPARE YOUR REMOTE FOR INSTALLATION



Open the battery door.



Insert 2 AA batteries.

### FINISH

Proceed to step 1: Set up your television, on the next page

### PRODUCT DISPOSAL

(EUROPEAN DIRECTIVE 2002/96/EC)  
The crossed out wheeled bin symbol on this product ensures that this product is manufactured using high quality components that can be recycled and reused according European Directive 2002/96/EC. Please do not dispose this product with your normal household waste but inform yourself about the local separate collection for electrical and electronic products to dispose this product correctly. This will help preventing potential negative effects on the environment and/or human health.

### BATTERY DISPOSAL

(EUROPEAN DIRECTIVE 2006/66/EC)  
Please do not dispose your batteries with your normal household waste but inform yourself about the local separate collection for empty batteries to dispose them correctly. This will help preventing potential negative effects on the environment and/or human health.

UNIVERSAL ELECTRONICS INC/ONE FOR ALL warrants to the original purchaser that this product will be free from defects in materials and workmanship under normal and correct use for a period of one (1) year from the date of original purchase. This product will be replaced free of charge if it has been proven to be defective within the one (1) year warranty period. This warranty does not cover cartons, carrying cases, batteries, broken or marred cabinets or any other item used in connection with the product. Any further obligation than listed above is excluded. To obtain warranty service during the warranty period, please call us at the number mentioned on the Customer Service page. Please notice that we need your purchase receipt so that we may establish your eligibility for service. If you have bought this product for purposes which are not related to your trade, business of profession, please remind that you may have legal rights under your national legislation governing the sale of consumer goods. This guarantee does not affect those rights.

Australia  
1 300 888 298  
ofa.support@ambertech.com.au  
www.ambertech.com.au  
www.oneforall.com



### SAT POWER

Power for Set Top Box, also used in Setup

### TV POWER

Power for TV, also used in Setup

### HOME

Home, Top Menu, Sky, Sat

### ACTIVE

Interactive services

### BOX OFFICE

Box office programmes

### GUIDE

Shows the TV Guide or EPG of your SAT

### PLANNER

Access planner

**VOL+/-, MUTE**  
If you set up a TV and SAT, the Volume and Mute keys will automatically control your TV

### I

Info

### BACK

This key allows you to go back to the previous page

### SETUP

Access setup menu

### FAV

Access your Favourite Channel List

### SUBT.

Turn Subtitles on or off

### HELP

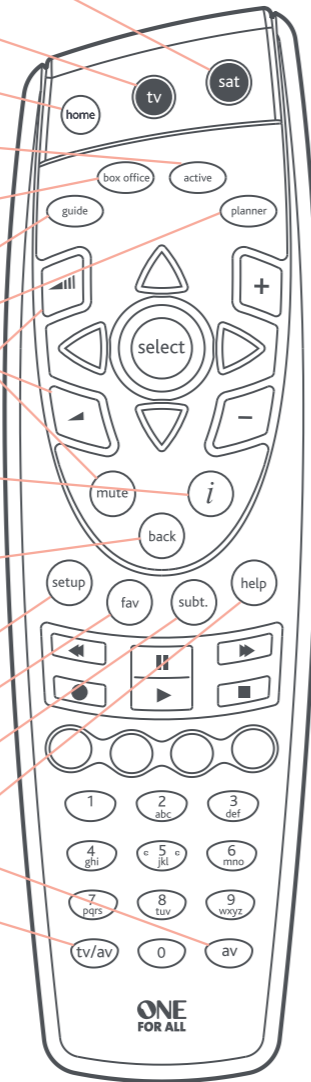
Displays the help channel

### AV

Set top box AV function

### TV/AV

If you set up a TV, you can change input on the TV with this key



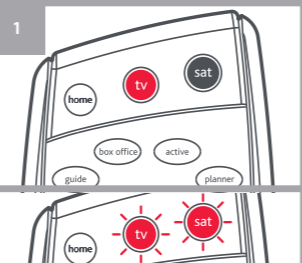
### STEP 1: SET UP YOUR TELEVISION

#### START WITH YOUR BRANDNUMBER: IS YOUR TV BRAND LISTED?

- |             |           |            |
|-------------|-----------|------------|
| 1 Bush      | 5 Samsung | 9 Technika |
| 2 LG        | 6 Sharp   | 0 Toshiba  |
| 3 Panasonic | 7 Soniq   |            |
| 4 Philips   | 8 Sony    |            |

#### YES: SIMPLESET

Turn on your TV (not standby).  
Point remote towards the TV.



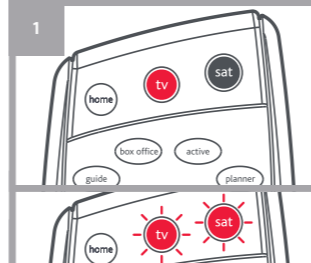
Press and hold the **TV POWER** key for 3 seconds. LEDs will blink twice.

### FINISH

Go to step 2: Set up your Set Top Box, on the next page.

#### NO: DIRECT SET

Locate the brand of your TV in the codebook.



Press and hold the **TV POWER** key for 3 seconds. LEDs will blink twice.

### FINISH

If Direct Set didn't work, go to step 3: Auto Search

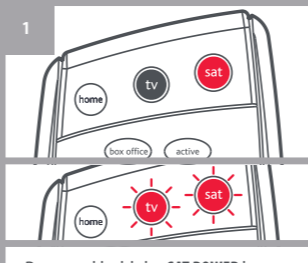
### STEP 2: SET UP YOUR SET TOP BOX

#### START WITH YOUR BRANDNUMBER: IS YOUR SET TOP BOX LISTED?

- |                    |                   |
|--------------------|-------------------|
| 1 BSkyB, Sky UK    | 5 Virgin Media    |
| 2 BT, BT Vision    | 6 Youview         |
| 3 Smallworld Cable | 7 Foxtel          |
| 4 TalkTalk         | 8 Sky New Zealand |

#### YES: SIMPLESET

Turn on your SAT (not standby).  
Point remote towards the SAT.



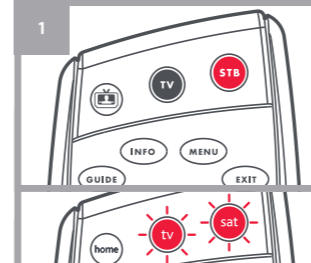
Press and hold the **SAT POWER** key for 3 seconds. LEDs will blink twice.

### FINISH

Go to step 2: Set up your Set Top Box, on the next page.

#### NO: DIRECT SET

Locate the brand of your Set Top Box in the codebook



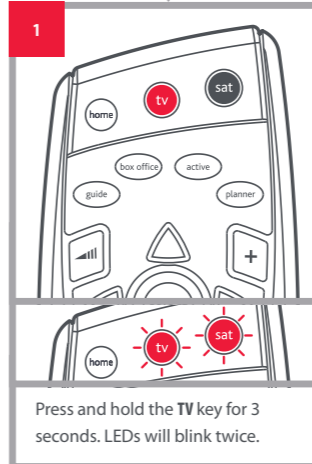
Press and hold the **SAT POWER** key for 3 seconds. LEDs will blink twice.

### FINISH

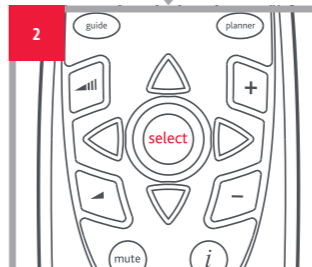
If Direct Set didn't work, go to step 3: Auto Search

### STEP 3: AUTO SEARCH (IF SIMPLESET OR AUTOSEARCH DOES NOT WORK)

#### START: CHOOSE TV OR SAT

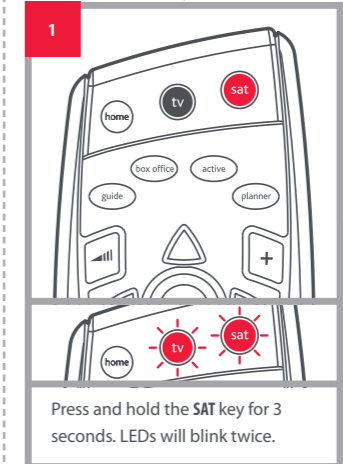


Press and hold the **TV** key for 3 seconds. LEDs will blink twice.

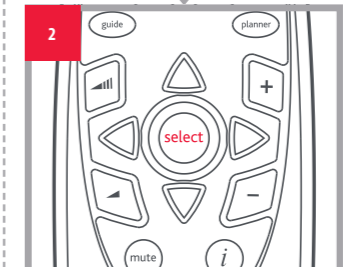


Point the remote at your TV. Press and release the **OK** button.  
The remote will send every 3 seconds a different Power signal to your TV  
As soon as the TV switches off, press OK to store the code. The LED will blink twice.  
*This may take up to 15 minutes.*

### FINISH



Press and hold the **SAT** key for 3 seconds. LEDs will blink twice.



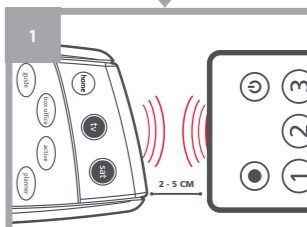
Point the remote at your SAT. Press and release the **OK** button.  
The remote will send every 3 seconds a different Power signal to your SAT  
As soon as the SAT switches off, press OK to store the code. The LED will blink twice.  
*This may take up to 15 minutes.*

### FINISH

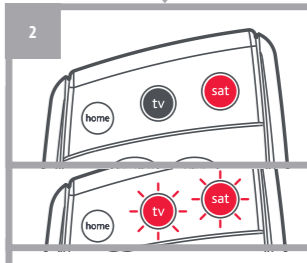
### STEP 4: COPY LEARN FUNCTION

#### START: LEARN A NEW FUNCTION TO YOUR REMOTE

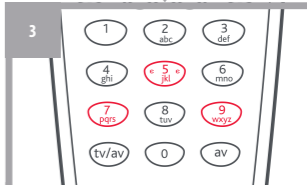
Your One For All remote can learn any function from your original (working) remote.



Place the original remote facing the One For All remote on a flat surface.



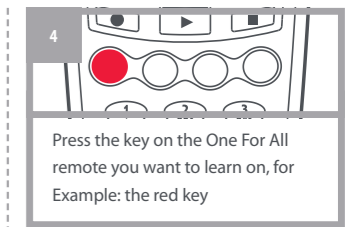
Press and hold the **SAT** key for 3 seconds. LEDs will blink twice.



Press **975**.  
The LED will blink twice.

#### HOW TO DELETE A LEARNED FUNCTION

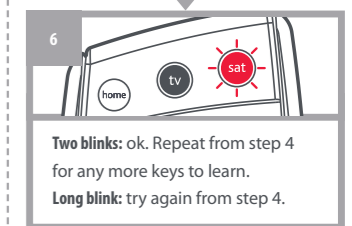
1. Press and hold SAT for 3 seconds. Both LED's will blink twice.
2. Press 976.
3. Hold the **CORRESPONDING** key you wish to delete for 3 seconds until the SAT LED blinks twice.
4. Press and hold SAT for 3 seconds to end the delete feature. The SAT LED will blink twice.



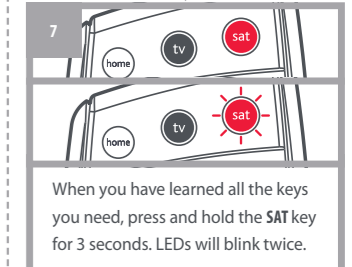
Press the key on the One For All remote you want to learn on, for Example: the red key



Press the key on the Original remote you want to learn, for Example: the TOP MENU



**Two blinks:** ok. Repeat from step 4 for any more keys to learn.  
**Long blink:** try again from step 4.



When you have learned all the keys you need, press and hold the **SAT** key for 3 seconds. LEDs will blink twice.